

# AKS-INTERNATIONAL (CRANES) LTD

Tel. 01373 813375

Fax: 01373 813576

e-mail [info@aks-cranes.com](mailto:info@aks-cranes.com)

## BOCKER AHK 31/1500 TRAILER TOWER CRANE



### Technical Data

Payload max.	1,500 kg
Extension length max.	31.00 m
Working height up to jib	23.00 m
Jib extendable	4.75 m up to 9.00 m
Angle of telescope arm	85 degrees
Angle of jib approx.	hydraulically 0 up to 165 degrees
Hook speed approx.	60 m/min
Bilateral support approx. L x W	5.4 m x 5.4 m
Support to one side max. L x W	7.3 m x 3.75 m
Vehicle dimensions L x W x H	9.10 m x 2.30 m x 2.92 m
Admissible total weight	3,500 kg
Working height with platform max.	22.5 m
Lateral range with platform max.	12.0 m at 250 kg 15.0 m at 150 kg



# AKS-INTERNATIONAL (CRANES) LTD

Tel. 01373 813375

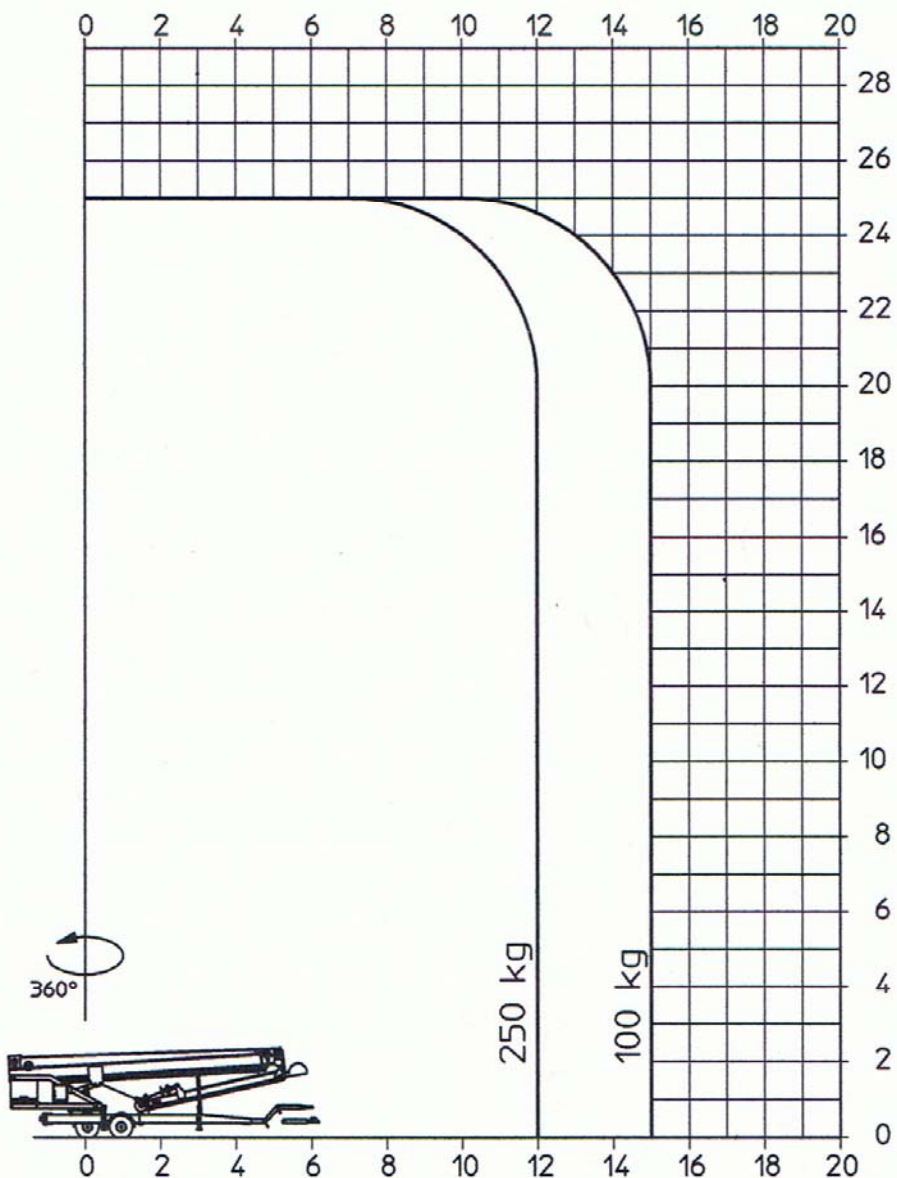
Fax: 01373 813576

e-mail info@aks-cranes.com

## BOCKER AHK 31/1500 TRAILER TOWER CRANE

### CAPACITY CHART WHEN USED AS ACCESS PLATFORM

#### Operation diagram platform AHK 31/1500



CRANE CAPACITIES THROUGH 360 deg.

Dimensions in metre [m]

Böcker reserves the rights for alterations to dimensions and constructions.

# AKS-INTERNATIONAL (CRANES) LTD

Tel. 01373 813375

Fax: 01373 813576

e-mail [info@aks-cranes.com](mailto:info@aks-cranes.com)

## BOCKER AHK 31/1500 TRAILER TOWER CRANE

